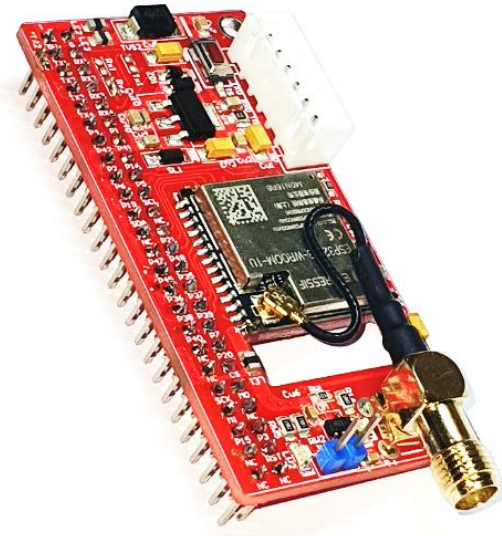


maychi.com.vn

PRODUCT DATASHEET

ESP32 WIFI MODULE



Maychi Automation Co. Ltd.

2023

Board features:

MCU: ESP32-S3

Supporting IEEE 802.11 b/g/n (2.4 GHz Wi-Fi) and Bluetooth® 5 (LE)

Integrated watchdog timer.

External antenna with SMA connector.

5V input voltage, built in 3.3V regulator.

Board dimensions:

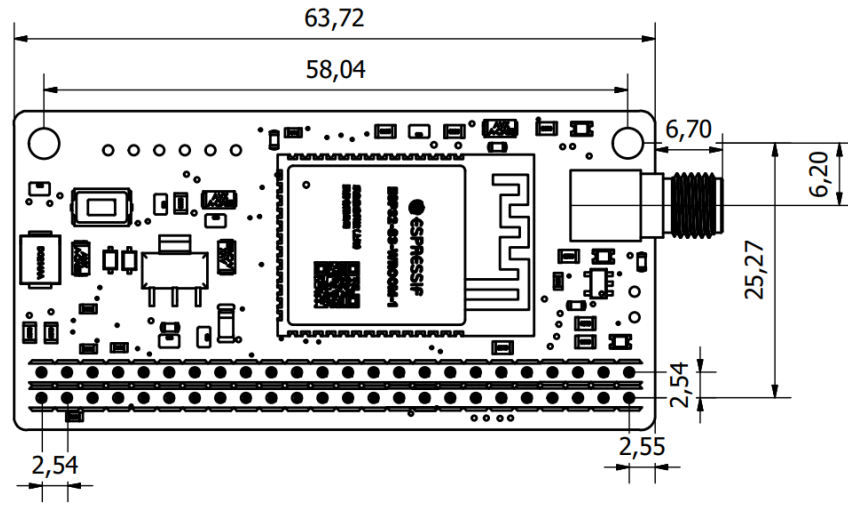


Fig 1. Board dimensions (mm)

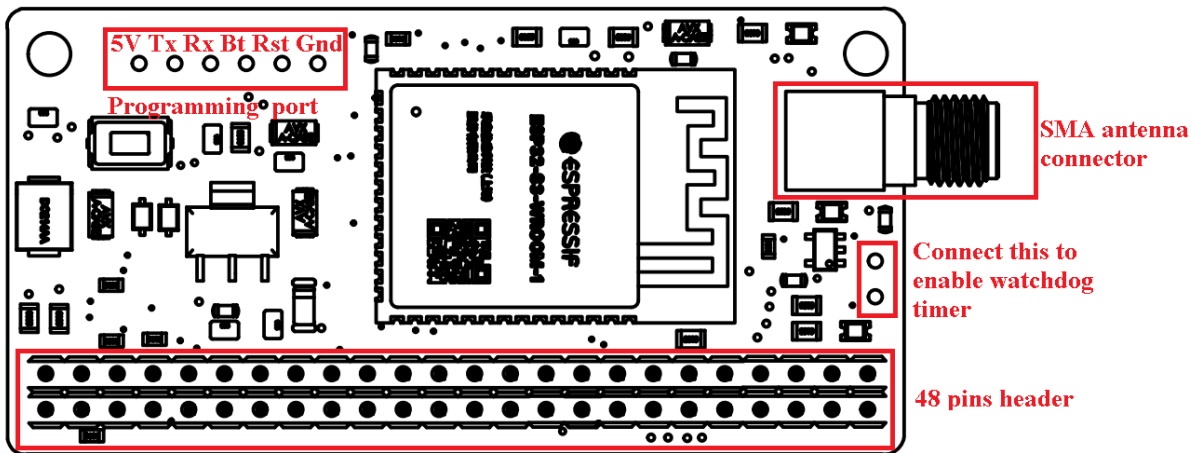
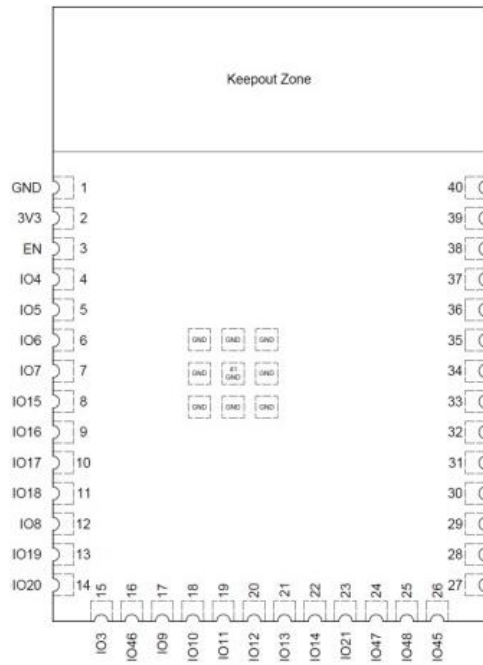
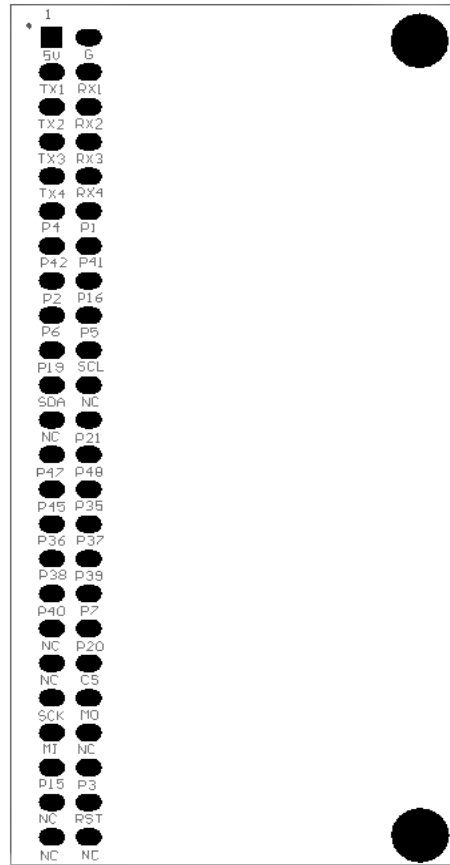


Fig 2. Board connectors

Pin configuration:



(a)



(b)

Fig 3. Pin configuration

a. Esp32-s3 IC pinout

b. Wi-Fi Module pinout

Pin out table

ESP Pin	Pin name	Function	Wi-Fi Module 48 pins header
		Power input	5V
1	GND	Power input	G
37	TX0	Communication	TX1
36	RX0	Communication	RX1
-	-	Reserved	TX2
-	-	Reserved	RX2
-	-	Reserved	TX3
-	-	Reserved	RX3
-	-	Reserved	TX4
-	-	Reserved	RX4
4	IO4	GPIO	P4
39	IO1	GPIO	P1
35	IO42	GPIO	P42
34	IO41	GPIO	P41
38	IO2	GPIO	P2
9	IO16	GPIO	P16
6	IO6	GPIO	P6
5	IO5	GPIO	P5
13	IO19	GPIO	P19
-	-	Reserved	SCL
-	-	Reserved	SDA
-	-	Reserved	NC
-	-	Reserved	NC
23	IO21	GPIO	P21
24	IO47	GPIO	P47
25	IO48	GPIO	P48
26	IO45	GPIO	P45
28	IO35	GPIO	P35
29	IO36	GPIO	P36
30	IO37	GPIO	P37
31	IO38	GPIO	P38
32	IO39	GPIO	P39
33	IO40	GPIO	P40
7	IO7	GPIO	P7
-	-	-	NC
14	IO20	GPIO	P20
-	-	-	NC
-	-	-	CS
-	-	-	SCK
-	-	-	MO
-	-	-	MI
-	-	-	NC
8	IO15	GPIO	P15
15	IO3	Control watch dog timer	P3
-	-	-	NC
		Reset esp32, active low	RST
-	-	-	NC
-	-	-	NC

Watch dog timer:

Watchdog timer is activated by connecting JW2 using a jumper.

Once activated, the watchdog timer is controlled by GPIO3(P3). If the status of pin P3 not changed in 0.3 second, watchdog timer will reset ESP32 by pulling the reset pin to GND.